

St. Alban's Chronicle



St. Alban's Episcopal Church
3001 Wisconsin Ave. NW
Washington, DC 20016

March 15, 2005

Transformation: A work in progress

You haven't seen any physical changes in St. Alban's structure, but the Building Committee has been working through the logistics of the planned renovations funded by the Transformed for Ministry Capital Campaign.

Many of you may recall that the concepts for changes to our building began to take shape in 2001, and the capital campaign was planned to begin that fall. The events of 9/11 and the subsequent plunge in the economy forced us into a prolonged pause until we could begin again last year. When we reached the necessary fundraising benchmark in mid-2004, we ended the "concept phase," based on the work of our architect and the West End Committee, and began the work of facing building realities, some of which had not been evident earlier.

One reality – and a product of the aforementioned campaign delay – was increased construction costs. Taken together with funds already expended and a modest shortfall in campaign pledges, vestry took a conservative course of action and asked the building committee to work with the available (or already pledged) funds, and to avoid substantial additional debt. The other significant challenges are structural: overly constricted traffic flow in one area, aging heating and air conditioning equipment, passage to and from the basement rooms of our choirs and flower guild, and the impact of the envisioned tower. These are not insurmountable problems, but they are important logistical issues to be addressed.

There are a number of outside agencies that must endorse this project, including the Historic Preservation Review Board (HPRB), the Board of Zoning Adjustment (BZA), and the Advisory Neighborhood Council (ANC). We are also committed to working closely with the Cathedral Buildings and Grounds Committee. It would not surprise you to know that each group has their own issues, and the Building Committee continues to work through them. The tower seems particularly problematic for the cathedral and the ANC.

With the backing of Vestry, an experienced project manager was hired to expedite day-to-day work and to ensure that budgetary and structural issues are addressed. Our original architect, who, with the hard-working West End Committee, laid the conceptual groundwork for this project, chose to withdraw as work parameters changed.

The Building Committee, under the leadership of Doug Lapp, is now working with the project manager to prepare requests for proposals (RFPs) from architectural firms. The focus is on value engineering – balancing options with the real costs – while honoring the original design for deepening our bonds of community through welcoming gathering spaces. The RFP will also specify that the building plan should not preclude future enhancements as additional funds become available. Those who have pledged to the campaign can be assured that the vision for which they gave their support guides the committee even while the details are addressed.

Continued on Page 3

To note

For additional information on these events, contact the Parish Office at 202-363-8286, Office@st-albans-parish.org

Save the Date Friday, April 22, 6:30-8:30 pm for a Farewell Party for Mary and Frank Wade ~ Celebration of 2000 Sundays. More details will be in the Sunday announcements and the April 1 Chronicle.

Parish Choir Concert The Fauré Requiem, Music of Benjamin Britten, Sunday, March 20 at 7 pm. This is part of our Jubilee 150 Sesquicentennial Concert Series. Details on Page 4.

Office Closed Holy Monday, March 28.

Daylight Saving Time begins Sunday, April 3. Set your clocks ahead one hour before going to bed on Saturday, April 2.

Meet the Candidates Sunday, April 10, meet those standing for Vestry and Diocesan Delegates at the Parish Form at 10:30 am in Satterlee Hall.

Presiding Bishop's Visit Sunday, April 17, the Most Reverend Frank Griswold, preacher and celebrant at the 11:15 am service.



We welcome the faithful, the seeker, and the doubter, for God's embrace is wide and God's Good News is for all.

WORSHIP AND PRAYER OPPORTUNITIES AT ST. ALBAN'S

SUNDAY

8:00 am Holy Eucharist, Rite I
 9:15 am Holy Eucharist, Rite II
 11:15 am Holy Eucharist, Rite I
 5:30 pm Holy Eucharist, Rite II

TUESDAY

7:30 am Holy Eucharist
 10:30 am Morning Prayer

WEDNESDAY

11:15 am Healing Eucharist

THURSDAY

Noon Centering Prayer

SATURDAY

9:00 am Prayers for St. Alban's

CLERGY

The Rev. Dr. Francis H. Wade, Rector
 The Rev. J. Carlyle Gill, Senior Associate Rector
 The Rev. Margot D. Critchfield, Associate Rector
 The Rev. Loren B. Mead, Honorary Associate
 The Rev. Douglas A. Greenaway, Assistant Rector
 Charles Fels, Seminarian

AMERICAN UNIVERSITY CHAPLAIN
 Carolyn Seaton

DIRECTORS

Day Dodson, Director of Children's and Youth Ministries
 Ron Hicks, Director of Operations
 Norman Scribner, Director of Music
 Sonya Subbaya Sutton, Director for Parish Music Ministries
 Jane Volkema, Director of Communications and Evangelism

OFFICE STAFF

Bob Bascom, Maintenance
 Shirley Dickey, Receptionist
 David Johnson, Community Life
 Vilma Smith, Finance Administrator
 Marcia Welch, Communications Assistant

VESTRY OFFICERS

Gordon Avery, Senior Warden; Kate Bouvé, Junior Warden;
 Nathalie Bramson, Secretary; Christopher Holmes, Treasurer

VESTRY MEMBERS

Joe Beach, Paul Brewster, Bob Dunn, Diana Dykstra,
 Cay Hartley, Dennis Jones, Douglas Lapp, Chris Larsen,
 Tricia Pinkard, Mary Jane Shackelford, Jo Turner, Monica Welch;
 Duncan McKenna, Youth Representative,
 Russell Eckel, WSA Board

ST. ALBAN'S EPISCOPAL CHURCH
 3001 Wisconsin Ave, NW, Washington, DC 20016
 Tel.: 202-363-8286 Fax: 202-363-6828
 Office Hours: Mon-Fri 8:30 am - 4:30 pm
 E-mail: First nameLast initial@st-albans-parish.org
 Web site: www.AlbansDC.org



The Rector's Aid emerges from hibernation

Like all good little bears, we have been quiet, but contemplative while reflecting on the good things that took place during the fall season of 2004.

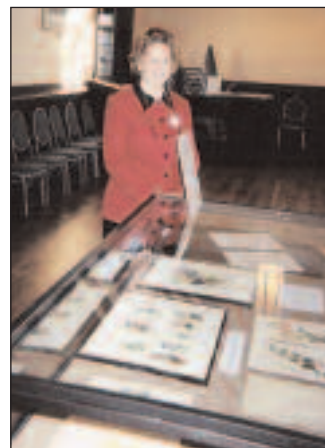
In the spirit of Jubilee 150, at our first meeting in October, we were surprised with a preview of St. Alban's history video, produced by Don Critchfield and narrated by our Rector Frank Wade. Way to go! The "Country Kitchen" Bake Sale on October 31 was deliciously successful thanks to the generosity of our

members and friends who kept their ovens busy. Whole Foods Market in Tenleytown again contributed generously with ham biscuits and pies. A very special thanks to Jenna VanHook, Marketing Specialist; and, department managers Bashir and Susy.

On November 28, the Phoebe Nourse Family water color botanicals exhibit was a memorable occasion. Thanks to the monumental efforts of Susan Niedenuhr, Nancy Cox and Betty Volpe and the curatorial skills of Dr. Ruth Cline, Nancy Work and Wendy Reeves.



The Rector's Aid note card reproductions of the botanical were a sell-out, but, not to worry, the boxed sets of 6 assorted cards have been re-ordered and are available for your pleasure.



Dr. Ruth Cline and the display of watercolors

We wound up the season with a festive Christmas luncheon prepared by our own Rector's Aid members, Nancy Geary Lewis and Sharon Spillhaus, with Catherine Davis presiding over the Social Hour. If you weren't there, you missed a mouth-watering feast. And there was more! Our Director of Music, Norman Scribner, and



Susan Niedenuhr sells the botanical notecards

vocalists presented a spirited holiday program. Always a highlight. Many, many thanks to one and all.

As busy as our members and friends are during the holiday season, they still found the time to join in the Rector's Aid outreach effort with wonderful toys for children at Martha's Table.

The spring season, 2005 is upon us and we will be blossoming forth with Rector's Aid meetings, luncheons and programs. So find your highlighters and start marking these meeting dates on your calendar: Friday, March 18; Friday, April 15; and Friday, May 20

We are looking forward to joining hands and hearts together once again.

Claire Murphy,
 President



Claire Murphy with a display of the botanical watercolor notecards

Continued from Cover

The committee will host a forum to talk about the evolving project and address questions as soon as substantial progress has been made in solving the above problems. In addition, there will be regular updates in the Chronicle.

Our wise associate rector, Carlyle Gill, reminds us that the two most traumatic times in the life of a parish are when a rector leaves

and during a building project! So in St. Alban's own little perfect storm, it is honest to say that this is not an easy time. Good people of firm faith have differed on several issues. In the belief that God has been at work with us from the beginning and certainly isn't done with us yet, we are reminded that listening, respect, and a commitment to serving the church's mission will help us extend the welcoming arms of St. Alban's and care for our spiritual home.

Sunday adult forums committee planning

– Cynthia B. Cohen

We are starting to plan for the Sunday adult forums after Frank leaves, and would like to organize a group of parishioners to help out with them. Beginning the summer, we will be melding together the Parish Form and the Emmaus Forum. Some of you who are familiar with St. Alban's history may remember, when we only had one Sunday forum, that I coordinated the Sunday Adult Forum Committee for several years. It was a great deal of fun and worked well because we had a lot of volunteers, each of whom did a small part of the work, so no one was overly burdened.

We took turns inviting speakers, introducing them, greeting those attending, sending speakers thank-you notes, writing up a small paragraph about their talks for the Chronicle and occasionally putting notices into newspapers. We had speakers from inside and outside St. Alban's who spoke on a wide range of topics, such as life in the Senate, early Christian churches and artwork in Turkey (with slides), ethics and new methods of assisted reproduction, the Episcopal Church's Migration Ministries, alcoholism and drug abuse at home and at work, new directions for Samaritan Ministry, how the bells work at the National Cathedral (with vocal accompaniment), and the situation in the Middle East. Of course, the clergy had Clergy Forums during Advent and Lent and other times during the church year.

Our clergy will be busier than ever while we search for a new rector, and it would be immensely helpful to them if we would arrange the Sunday Adult Forums with their advice. Please volunteer to help out. This offers a great ministry and a way of meeting and greeting people within and without the parish. It will call for about two meetings in the spring, one in the late

summer and one or two in the fall and winter. If you are currently working on the Emmaus Forums, you are especially invited to join in this extension of your work.

If you are interested in participating, contact me at ccohen@aol.com or 301-942-6077 as soon as possible. Let me know whether you prefer meeting, 1) on a weekday evening (a) with a light supper or (b) after dinner, or else, 2) on a Saturday morning. We aim to have our first planning meeting toward the end of March. This meeting is open to those who wish to join the committee, as well as to those who just want to share ideas about speakers, topics, or how to coordinate our efforts.

Search Committee

Next meeting set for Monday, April 4

Gordon Avery, Chair of the Search Committee reported, that a session on the search process at the Vestry retreat, Saturday morning, May 7 has been planned. The Search Committee will be invited for that discussion, and Search and Vestry can develop an "understanding" as to how the process will culminate. Search Committee meetings will set aside time allowing committee members to report feedback from the parish. It was agreed the committee will meet the first Monday of each month, 5:30 to 7:00 pm, unless specifically rescheduled.

Prospects Subcommittee report: John Daniel Reaves, Chair, the book "Beginning Ministry Together" is now available to each Search Committee member, and will be collected at the end of the search and donated to the Diocese for use by other parishes in the search process. John Daniel made the point that the Prospects Subcommittee is gearing up

Profile Subcommittee report: Linda Bickford, Chair, reported finding on-line websites which can facilitate preparation

and tabulation of surveys at a minimal cost. Committee has met and used a profile from the previous rector search as a springboard. Also, reference was made to the book "Beginning Ministry Together" and to exemplary surveys from other churches. A draft survey was circulated and filled out during the meeting by all. This resulted in discussion of user-friendliness and about the appropriateness of certain questions.

The Profile Subcommittee has explored expert consultation with Sandy Kolb, who was senior warden and led a rector search at St. John's Lafayette Square. She now does consultation but was unable to be present at the March 7 meeting. She will meet with Linda, John Daniel and Gordon on March 14.

Gordon Avery is Chairperson of the Search Committee. Members of the Profile Subcommittee are: Peter Albert, Fred Darr, Liz Leland, Bob Pinkard, Mary Snitch, and Lizzie Thorne; Jane Volkema (ex-officio); and Linda Bickford, Chair. The members of the Prospects Subcommittee are: Barbara Conyers, Rachael Freytag, Jeff Harwood, Dennis Johnson, Alex Netchvolodoff, Amy Slemmer, Jim Sottile, Linda Wilson, and John Daniel Reaves, Chair.

Transformation Fund update

Bob Witten, Committee Chair

To date, the Transformation Fund Grant Committee has received 15 grant requests. It has awarded seven grants, totaling \$49,500. In addition, \$2,750 in seminary stipends have been awarded. The total of grants disbursed so far is \$52,250.

Two requests have been withdrawn, two have been rejected, and four remain under review. Those four were considered at the quarterly meeting held on Saturday, March 12. Future updates will reflect the decision on these four requests.

A concert to begin Holy Week

Sunday, March 20 ~ 7pm

St. Alban's Episcopal Church

Jubilee 150 Concert Series

Canticle II: Abraham and Isaac

by Benjamin Britten

Leslie Bearden, alto and Richard Turner, tenor

Requiem by Gabriel Fauré

St. Alban's Parish Choir, Sonya Sutton, Director
Mary Shaffran, soprano and James Shaffran, baritone

Freewill offering

The Art of Faith: Celebrating Creativity at St. Alban's Church

April 17, 2005 ~ 10:00 am – 2:00 pm

When our founder Phoebe Nourse died in 1854 at the age of 24, she left 40 pieces of gold that she had earned by selling botanical watercolors and needlepoint, with instructions that it be used to build a church on Mount St. Alban's. Her sisters and mother began selling their watercolors and needlepoint to complete construction of the church. So, in a very real sense, ours is a church that the art of faith has built. As a grand finale to our Sesquicentennial Celebration, we are planning to honor our artistic heritage by a very special celebration of the creativity within our congregation today.

Calling all artists, amateur and professional, famous or undiscovered! We plan to showcase the work of our parishioners: writers, painters, crafters, photographers and artists of all kinds, including our children. If you are interested in having something of yours on display, be it a book you've written, a watercolor you've painted, a pillow you've needlepointed, a quilt you've sewn, some photographs you've taken, a sweater you've knit, etc., please contact a committee member immediately. We even plan to have creative refreshments!

Painting, craft or photography

Lois Stratton 202-234-1228 lostratton@cs.com

Books

Susan Niedenuhr 202-363-5196 sjnfw@msn.com

Hospitality/food

Karen Strimple 202-333-7234 kstrimple@columba.org

Café St. Alban's

Palm Sunday, March 20 8:30 am - 1 pm

Enjoy great food and fellowship while contribution to St. Alban's youth ministries. Brunch includes waffles, eggs, bagels and fruit. Have a quick bite before church or linger afterward. All donations fund the youth pilgrimage to Greece.

Less you not forget

Claire Murphy, Rector's Aid President

New season begins on Friday, March 18. Dr. Ruth Cline, a distinguished art historian, will be presenting a program devoted to the stained glass windows of St. Alban's Church. She will guide us on a tour and reveal the fascinating facts about one of St. Alban's treasure troves.

This year we have a spring surprise—a new location. We will now meet in the Rectory Parlor. Business meeting will begin at 11 am, social hour at noon, and the luncheon and program at 1 pm. New members and guests are always welcome. RSVP by calling the Parish Office 202-363-8286. Lunch is \$10 per person.

Mustard Seed Offering

The loose offering collected on Sunday, March 20 will go to Cuttington College in Liberia via Episcopal Relief and Development. Cuttington is an old and distinguished Episcopal institution. Established with a gift from Robert Cutting, treasurer of the Episcopal Church in 1889, the college has educated generations of Liberians, church leaders, government officials, entrepreneurs, nurses, and accountants.



2000 Sundays: Reflections on Retiring

The Rev. Dr. Francis H. Wade

People have asked me what I intend to do when I retire. As I said in my letter to the parish, I hope to teach, preach and write. Several people and institutions have indicated that they would like for me to do that for them,

but I do not have anything firm. Nor do I want anything firm anytime soon. For the past 2000 Sundays, my responsibilities as leader of a congregation have constituted the core of my professional life. Decisions about what to do depended on whether those parish obligations were or could be met. Those obligations (with their attending joys and stresses) are what I am retiring from. I do not yet know what I am retiring to. I need at least the summer to allow a new core to form so that I can make sense out of what I seek, agree and decline to do. The new core will not have the structure provided by the "second oldest profession" (priesthood – you know the oldest). The new core will include new ways to be part of my family, my community, my church, the nation and the world. I don't know what it will look like but I need to find out before I make any big commitments.

The short answer to what we will do is, when our fourth grandchild is born in Michigan in mid-May, Mary and I will take a leisurely drive through old haunts in West Virginia on our way to help out with the new one. Since my previous "core" has not allowed much time for domestic training, I will undoubtedly be assigned care of the dog and long walks with the new one's two year-old brother. It seems a good way to start figuring things out.

Sign Frank's electronic guestbook at www.AlbansDC.org

So much to say, so little time

Now you can post your thoughts and well-wishes to Frank Wade at our web site. Go to www.AlbansDC.org and click on "sign Frank's guestbook" at the bottom of the HOME page.

From there a new window will open. The first message posted is the instructions on how to post your message.

If you want your message to be seen only by Frank and Mary, check the Private Message box. You will see a preview of your message. Edit as necessary. Remember, you cannot edit a message once it has been posted.

All non-private messages will pass through an approval stage prior to posting. Your message may not appear right away. If for some reason you want your message deleted, send an email to JaneV@st-albans-parish.org with the word GUESTBOOK in the subject line.

Have fun sending your messages to Frank and Mary, and reading what others have to say.

"Low Sunday"?

From about the year 1400 on, the Sunday after Easter has been known as "Low Sunday" in parts of the Church. After the joy and celebration of Easter, things calmed down again, and Low Sunday marked a return to regular worship services. Christ was risen, but life went on more or less normally.

But not at St. Alban's! —

On the Sunday after Easter, April 3, St. Alban's will offer two uplifting musical services...

The Women's Voices of St. Alban's will present *Hope is the Thing: An Emily Dickinson Suite*, music of Emma Lou Diemer at the 9:15 and 11:15 am services. This is a musical sermon that explores spirituality from the point of view of a skeptic on "Doubting Thomas" Sunday.

At the 5:30 pm service, Jazz Mass by William Smith of American University will be presented by the five musicians of the WES Group. It promises to be an exhilarating way to worship that will make it clear there is no letdown after Easter at St. Alban's.

Editor's note: The following excerpt from the Episcopal News Service, is printed here as a service to St. Alban's parishioners to inform them of the views expressed by our Presiding Bishop, which may or may not reflect the views of St. Alban's clergy and staff. Understanding that not everyone shares the views represented here, parishioners may send their response, of similar tone and length, to JaneV@st-albans-parish.org for publication consideration. Copies of the Joint Statement can be picked up in the Narthex.

Protestant leaders call the Bush's 2006 budget "unjust"

John Johnson,

Domestic Policy Analyst,
Episcopal Church Office of Government Relations

Leaders of five mainline Protestant denominations representing over 20 million followers in the United States called President Bush's 2006 federal budget "unjust."

Speaking together at a press conference, on March 8, in Washington, DC, leaders of the Episcopal Church USA, Evangelical Lutheran Church in America, Presbyterian Church (USA), United Church of Christ, and United Methodist Church invoked Luke's Gospel story of a poor man named Lazarus laying at the gate of a rich man who ignores the poor man's needs. When the two men die, Lazarus goes to heaven, and the rich man to hell.

"In telling this story, Jesus makes clear that perpetrating economic injustice is among the gravest of sins," the leaders said in a joint statement.

"Like many Americans, we read our daily newspaper through the lens of faith, and when we see injustice, it is our duty to say so," they added. "The 2006 Federal Budget that President Bush has sent to Capitol Hill is unjust. It has much for the rich man and little for Lazarus."

The statement was signed by: the Most Rev. Frank Griswold, Presiding Bishop of the Episcopal Church USA, the Right Rev. Mark Hanson, Presiding Bishop of the Evangelical Lutheran Church of America, the Rev. Dr. Clifton Kirkpatrick, Stated Clerk of the General Assembly, Presbyterian Church (USA), United Church of Christ General Minister and President John H. Thomas, and James Winkler, General Secretary of the General

Board of Church and Society of the United Methodist Church

In separate statements, the church leaders pointed out areas of particular concern. Bishop Frank Griswold said that three questions should be asked about the budget: "Is the budget compassionate? Does the budget strive to serve the human family, both at home and around the world? Does the budget serve the common good?"

Dr. Clifton Kirkpatrick quoted the General Assembly of the Presbyterian Church (U.S.A.) by saying it, "Calls on Congressional Representatives to insist on a government that follows ethical values of justice for the poor, welfare for children, hospitality to the stranger, and assistance to the disadvantaged."

Bishop Mark Hanson pointed out that faith-based ministry "is not new" for Christian charities. He added: "The President's proposed cuts are to the very programs, especially the net \$45 billion cut to Medicaid, that support many Lutheran social ministry organizations and the services they provide. If these cuts are implemented, a significant number of these providers may become vulnerable since they operate on very small margins. The real damage, however, is done to the people who desperately need the services provided by LSA."

Rev. John Thomas said: "There is no more important moral value in this country than supporting families, especially those who are poor. The President's budget is anything but good news for the poor."

James Winkler added: "How are we as a nation—the richest nation in the world—caring for our children?" The United Methodist Council of Bishops reminds us, "The technical resources are available to protect children from the most common diseases, to provide them with the necessities of food, shelter, clothing, and health care. What is lacking are the vision and the moral will."

The leaders concluded their joint statement saying: "We urge the members of our churches, of other churches and other faiths, and all whose conscience compels them to do justice to join us in opposing this budget. And we invite them to work with us on economic policies infused with the spirit of the man who began his public ministry almost 2,000 years ago by proclaiming that God had anointed him "to bring good news to the poor."

PALM SUNDAY

March 20, 2005

- 7:30 am Gather in the church as usual
- 9:15 am Gather at the Peace Cross
- 11:15 am Gather at the Peace Cross
- 5:30 pm Gather in the church as usual
- 7:00 pm Parish Choir Concert

HOLY EUCHARIST WITH HOMILY

March 21 through 25, 2005

- Monday, March 21 7:30 am ~ Shell Kimble
6:30 pm ~ Gini Gerbasi
- Tuesday, March 22 7:30 am ~ Tuesday congregation
6:30 pm ~ Sarabeth Goodwin
- Wednesday, March 23 7:30 am ~ Brooks Hundley
11:15 am ~ Healing Service
6:30 pm ~ Charles Fels
- Thursday, March 24 7:30 am ~ Day Dodson
- Friday, March 25 7:30 am ~ Sally Slater

MAUNDY THURSDAY

March 24, 2005

- 7:30 am Holy Eucharist
- 6:30 pm Light Supper and Footwashing
- 7:30 pm Holy Eucharist

GOOD FRIDAY

March 25, 2005

There is no Holy Eucharist on Good Friday.

- 7:30 am Liturgy of Good Friday
- Noon-3 pm The Three Hours
Adam and Eve at the Cross
- Noon "Temptation" The Rev. Margot Critchfield
- 1:00 pm "Fear" The Rev. J. Carlyle Gill
- 2:00 pm "Blame" The Rev. Dr. Francis H. Wade
- Noon-3 pm Youth Program
- 1:30-3 pm Children's Program
- 6:30 pm Liturgy of Good Friday with Taizé music
The Rev. Douglas A. Greenaway

HOLY SATURDAY

March 26, 2005

- Great Vigil of Easter at 8:00 pm
- Holy Eucharist Rite II with Holy Baptism

Bring a bell to welcome the return of the glad Alleluias. An Easter reception follows in Satterlee Hall.

EASTER SUNDAY

March 27, 2005

Festival Celebration of the Resurrection of our Lord

- 7:30 am * St. Alban's Parish Church
The Rev. Dr. Francis H. Wade
- 9:15 am St. Alban's Parish Church
The Rev. Dr. Francis H. Wade
- 9:30 am Little Sanctuary (St. Albans School)
The Rev. Douglas A. Greenaway
- 11:15 am St. Alban's Parish Church
The Rev. Dr. Francis H. Wade
- 11:30 am Little Sanctuary (St. Albans School)
The Rev. Douglas A. Greenaway
- 5:30 pm St. Alban's Parish Church
The Rev. Dr. Francis H. Wade

* Note earlier start time.

FIRST SUNDAY AFTER EASTER

April 3, 2005

- 8:00 am Holy Eucharist, Rite I
- 9:15 am & The Women's Voices of St. Alban's
- 11:15 am Hope is the Thing: An Emily Dickinson Suite
with Holy Eucharist
- 5:30 pm Jazz Mass by William Smith of American
University, with Holy Eucharist

Note: Daylight Saving Time begins on April 3. Set your clocks
AHEAD one hour before turning in on Saturday night.

Submit articles for the Chronicle to: JaneV@st-albans-parish.org

Articles for the April 1, 2005 Chronicle must be received by March 15, 2005

Articles for the April 15, 2005 Chronicle must be received by April 1, 2005

St. Alban's Communications Team: The Rev. Carlyle Gill, The Rev. Margot Critchfield, Sonya Sutton, Jane Volkema and Marcia Welch



St. Alban's Chronicle (USPS 560-600) is a periodical published twice-monthly (except in June and July when it is monthly) by St. Alban's Episcopal Church, Washington, DC. Postmaster: send address changes to St. Alban's Episcopal Church, 3001 Wisconsin Ave. NW, Washington, DC 20016-5099.

